

**Anti-c-Cbl (Tyr-700), Phosphospecific Antibody**  
Catalog # AN1689**Specification****Anti-c-Cbl (Tyr-700), Phosphospecific Antibody - Product Information**

Primary Accession	<a href="#">P22681</a>
Reactivity	<b>Bovine</b>
Host	<b>Mouse</b>
Clonality	<b>Mouse Monoclonal</b>
Isotype	<b>IgG1</b>
Calculated MW	<b>99633</b>

**Anti-c-Cbl (Tyr-700), Phosphospecific Antibody - Additional Information**Gene ID **867****Other Names**

E3 ubiquitin ligase CBL, RING finger 55

**Target/Specificity**

c-Cbl proto-oncogene is a ubiquitously expressed cytoplasmic adaptor protein that is especially predominant in hematopoietic cells. c-Cbl possesses a highly conserved amino-terminal phosphotyrosine binding domain and a C3HC4 RING finger motif. c-Cbl is rapidly tyrosine phosphorylated in response to stimulation of a variety of cell-surface receptors and becomes associated with a number of intracellular signaling molecules such as protein tyrosine kinases, phosphatidylinositol 3 kinase (PI3K), Crk and 14-3-3 proteins. In human cancer tissues, c-Cbl is frequently tyrosine phosphorylated in a tumor-specific manner. Src-family kinases primarily phosphorylate c-Cbl at Tyr-700, Tyr-731, and Tyr-774. These sites of phosphorylation provide docking sites for downstream signaling components, such as Grb-2, PI3K, and Fyn.

**Format**

Protein A Purified

**Storage**

Maintain refrigerated at 2-8°C for up to 6 months. For long term storage store at -20°C in small aliquots to prevent freeze-thaw cycles.

**Precautions**

Anti-c-Cbl (Tyr-700), Phosphospecific Antibody is for research use only and not for use in diagnostic or therapeutic procedures.

**Shipping**

Blue Ice

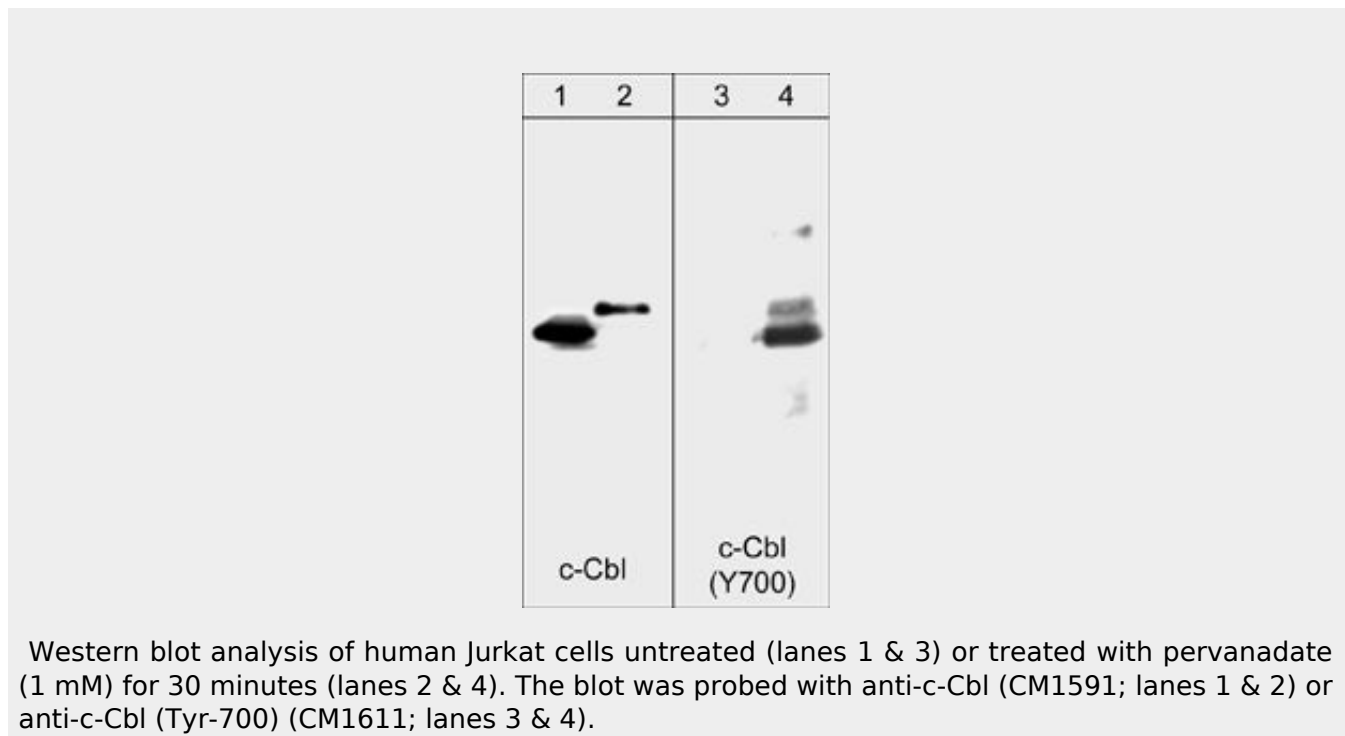
**Anti-c-Cbl (Tyr-700), Phosphospecific Antibody - Protocols**

Provided below are standard protocols that you may find useful for product applications.

- [Western Blot](#)

- [Blocking Peptides](#)
- [Dot Blot](#)
- [Immunohistochemistry](#)
- [Immunofluorescence](#)
- [Immunoprecipitation](#)
- [Flow Cytometry](#)
- [Cell Culture](#)

#### Anti-c-Cbl (Tyr-700), Phosphospecific Antibody - Images



#### Anti-c-Cbl (Tyr-700), Phosphospecific Antibody - Background

c-Cbl proto-oncogene is a ubiquitously expressed cytoplasmic adaptor protein that is especially predominant in hematopoietic cells. c-Cbl possesses a highly conserved amino-terminal phosphotyrosine binding domain and a C3HC4 RING finger motif. c-Cbl is rapidly tyrosine phosphorylated in response to stimulation of a variety of cell-surface receptors and becomes associated with a number of intracellular signaling molecules such as protein tyrosine kinases, phosphatidylinositol 3 kinase (PI3K), Crk and 14-3-3 proteins. In human cancer tissues, c-Cbl is frequently tyrosine phosphorylated in a tumor-specific manner. Src-family kinases primarily phosphorylate c-Cbl at Tyr-700, Tyr-731, and Tyr-774. These sites of phosphorylation provide docking sites for downstream signaling components, such as Grb-2, PI3K, and Fyn.